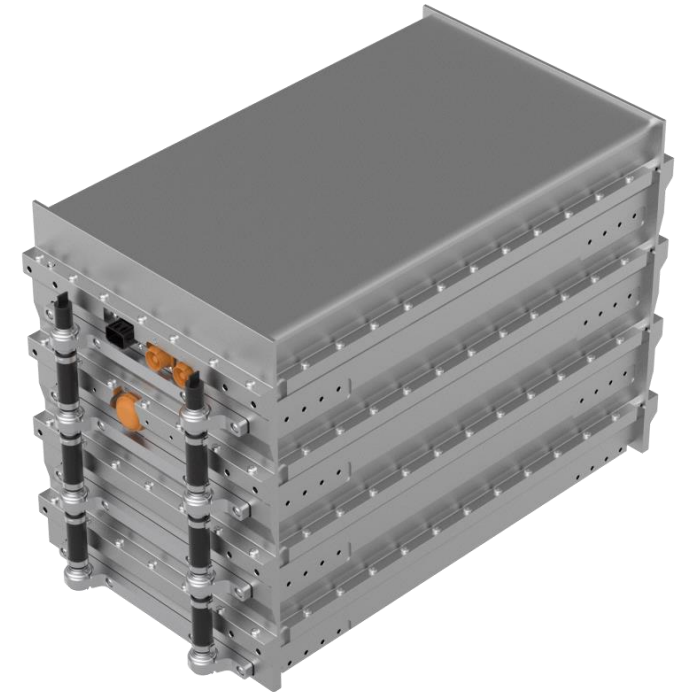


DEUTZ High Performance NMC Battery



High power discharge and charge capabilities

- Powerful: Up to 400 V & 600 A
- Sustainable: No CO₂ emissions with green energy
- Robust: Designed for Off-Highway applications
- Compact: Formfactor for engine compartments or narrow spaces
- Flexible: Parallel and serial connection

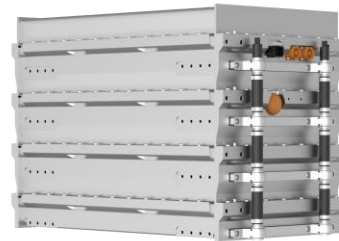
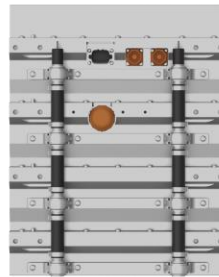


www.innotrans.deutz.com

DEUTZ High Performance NMC Battery



GEN2 – E360 39 kWh



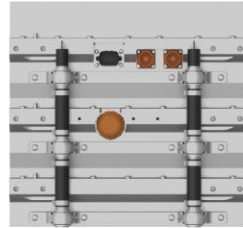
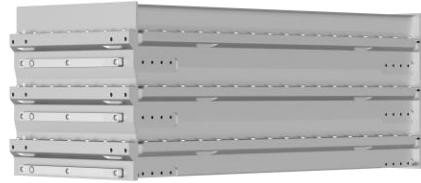
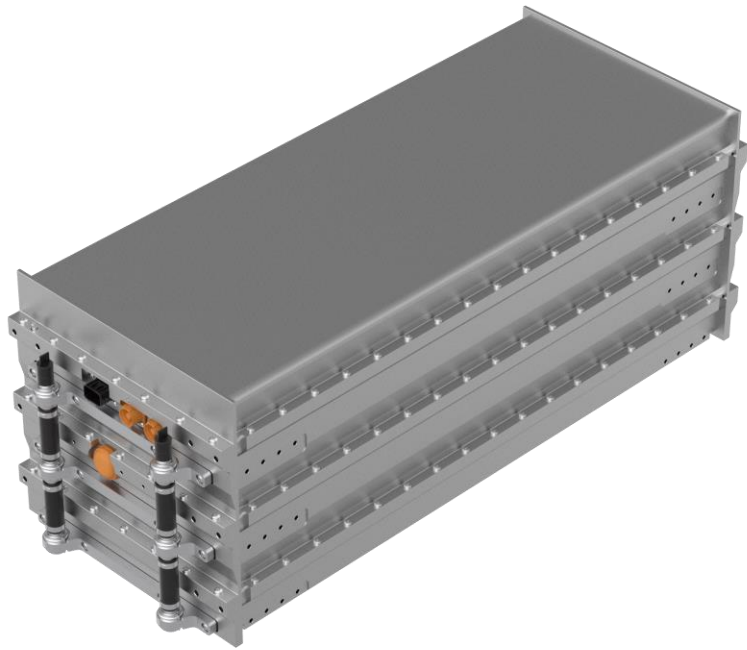
Technical Data

Battery type	Li-Ion (NMC)
Nominal voltage	335 V
Voltage range	303 – 377 V
Nominal capacity	38.6 kWh
Usable capacity (@ 90 % DoD)	34.7 kWh
Discharge current (cont. / max.)	176 A / 600 A (10s)
Charge current (cont. / max.)	106 A / 384 A (10s)
Cooling	Water/glycol cooled with water/air heat exchanger
Operating cell temperature	-30 °C to 55 °C
IP protective class	IP67, IP6k9k
Full equivalent cycles during lifetime (until 70 % SoH & 0.5C/1C CH/DCH)	2500
Dimensions (L x W x H)	766 x 440 x 550 mm
Weight	275 kg
Vol. & grav. energy density	208 Wh/l & 140 Wh/kg

DEUTZ High Performance NMC Battery



GEN2 – E360 41 kWh



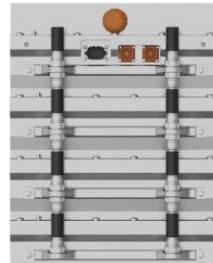
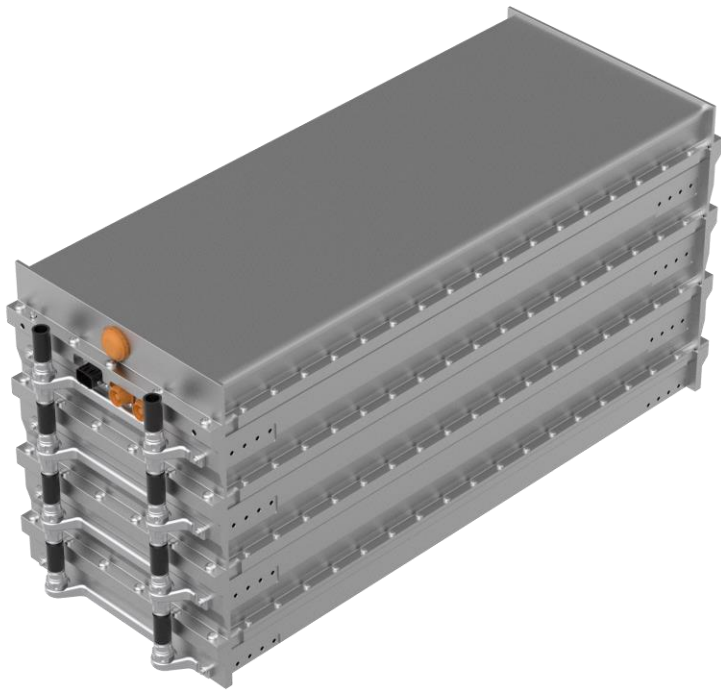
Technical Data

Battery type	Li-Ion (NMC)
Nominal voltage	358 V
Voltage range	323 – 402 V
Nominal capacity	41.2 kWh
Usable capacity (@ 90 % DoD)	36.7 kWh
Discharge current (cont. / max.)	176 A / 600 A (10s)
Charge current (cont. / max.)	106 A / 384 A (10s)
Cooling	Water/glycol cooled with water/air heat exchanger
Operating cell temperature	-30 °C to 55 °C
IP protective class	IP67, IP6k9k
Full equivalent cycles during lifetime (until 70 % SoH & 0.5C/1C CH/DCH)	2500
Dimensions (L x W x H)	1080 x 440 x 420 mm
Weight	290 kg
Vol. & grav. energy density	206 Wh/l & 142 Wh/kg

DEUTZ High Performance NMC Battery



GEN2 – E360 59 kWh



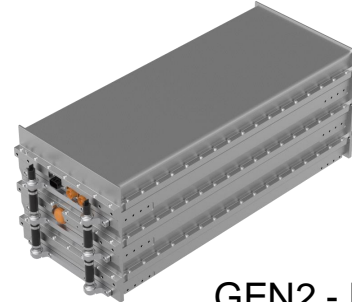
Technical Data

Battery type	Li-Ion (NMC)
Nominal voltage	343 V
Voltage range	310 – 385 V
Nominal capacity	59.2 kWh
Usable capacity (@ 90 % DoD)	53.3 kWh
Discharge current (cont. / max.)	250 A / 600 A (10s)
Charge current (cont. / max.)	158 A / 576 A (10s)
Cooling	Water/glycol cooled with water/air heat exchanger
Operating cell temperature	-30 °C to 55 °C
IP protective class	IP67, IP6k9k
Full equivalent cycles during lifetime (until 70 % SoH & 0.5C/1C CH/DCH)	2500
Dimensions (L x W x H)	1080 x 440 x 550 mm
Weight	405 kg
Vol. & grav. energy density	226 Wh/l & 146 Wh/kg

DEUTZ High Performance NMC Battery



DEUTZ GEN2 Modular Battery Kit



E-DEUTZ HV-Battery	Unit	GEN2 – E360 59	GEN2 - E360 41	GEN2 - E360 39
Nominal Capacity	kWh	59.2	41.2	38.6
Nominal Voltage	V	343	358	335
Discharge Current / Power (nom./max) @ U _{nom}	A	250 A / 600 A (10s)	176 A / 600 A (10s)	176 A / 600 A (10s)
Conditioning	-	Optional Water Cooling	Optional Water Cooling	Optional Water Cooling
Energy Density (vol. grav.)	Wh/l Wh/kg	226 146	206 142	208 140
Configuration	-	6x4	6x3	4x4
Dimensions – Length	mm	1080	1080	766
Dimensions – Height	mm	550	420	550
Dimensions – Width	mm	440	440	440
Availability (PT series)	-	2024 2025	2024 2025	2023 2024

Dimensions excluding fixings